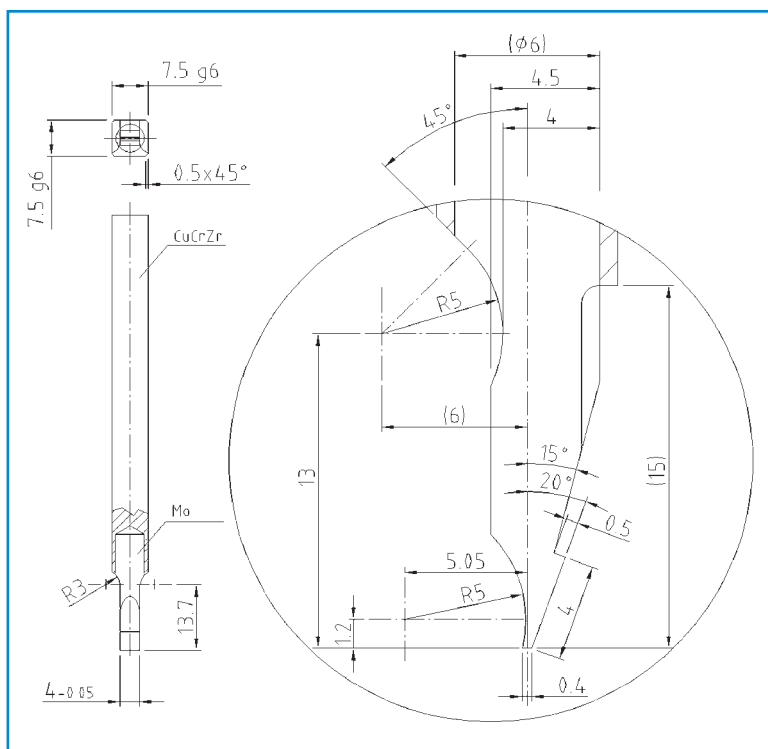


The correct choice of electrode in material and shape affects the quality of the weld joint. Welding electrodes not only transfer the welding current to the workpiece, but also apply the electrode force. Therefore they must satisfy both electrical and mechanical requirements in the same way. Shape, mass and electrode material and their electrical and thermal conductivities - have a direct effect on the heat balance of the welding process.

We offer you different electrode material depending on kind of the materials to be welded together:

- **CuCrZr**
- **CuCoBe**
- **CuWo**
- **TZM**
- **Tungsten**
- **Molybdenum**



The **LINGL** welding engineering supplies standard- and special electrodes adapted to the welding process in the **highest quality**.